

CSR Report 2024





Clarisse Fil Tardieu
CSR Director

Dear colleagues, customers, and partners,

CSR is at the core of our business, enabling us to address tomorrow's challenges today. The past few months have been marked by significant progress and concrete achievements across all our subsidiaries. It is with great pleasure that I present to you the Cyclife Group's annual CSR report. Our mission is to provide innovative, integrated solutions for the decommissioning and management of radioactive materials and waste to contribute to a sustainable future for nuclear energy.

This report highlights the various initiatives we have undertaken across our four pillars: **the circular economy** and **innovative technologies, human development, collective engagement,** and **environmental impact.**

In 2024, we began construction of a new plant in Sweden that will double our metal recycling capacity by 2026. In the UK, we received the world's first ISO 30415 certification for diversity and inclusion in a nuclear sector company, underlining our commitment to an inclusive working environment. Our teams made progress on the decommissioning projects for EDF at Fessenheim and Creys-Malville, marking significant milestones in our operations. Our HR and social commitments continue, with training provided for 92% of our employees, enhanced skills and a commitment that continues to grow. 2025 and 2026 will be key years for the pursuit of our CSR objectives, with commitments taking shape against a backdrop of increasing customer demands and internal and external expectations that remain as strong as ever.

As organisations that are firmly committed to the fight against global warming, we are proud to be helping to build a carbon-neutral future.

Enjoy the read,
Clarisse Fil Tardieu

*« CSR is at the heart of everything we do.
I am proud of our commitment. »
Estelle Desroches, CEO of Cyclife*

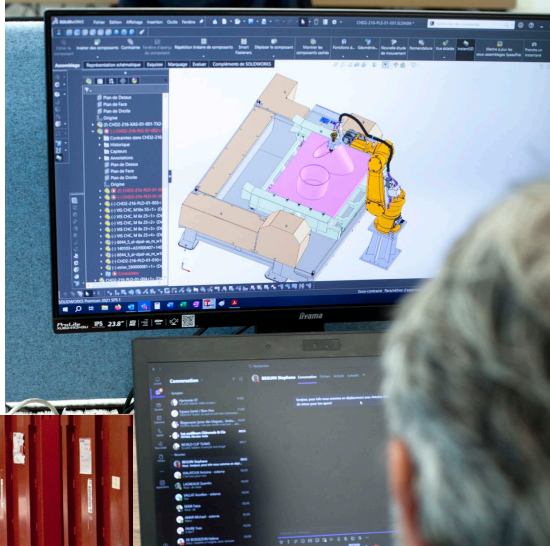
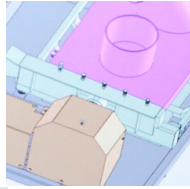


Estelle Desroches
CEO



Table of contents

Introduction	
Editorial	3
About Cyclife	4
CSR Strategy	6
1. Circular Economy and Innovative Technologies	9
2. Human Development	12
3. Collective Commitment	15
4. Environmental Impact	18



Cyclife, *a leading player* in the decommissioning and management of nuclear waste

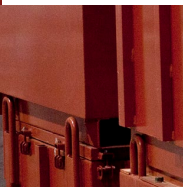
A fully owned subsidiary of the EDF Group, Cyclife supports its clients in their nuclear decommissioning projects and in the management of their radioactive waste, whether generated by plant operations or by the dismantling of facilities.

Our goal

We are a leader in the European market for nuclear decommissioning and radioactive waste management, offering innovative, competitive, and customized services.

Our mission

“ To provide innovative, integrated solutions for the decommissioning and management of radioactive materials and waste in order to contribute to a sustainable future for nuclear energy.

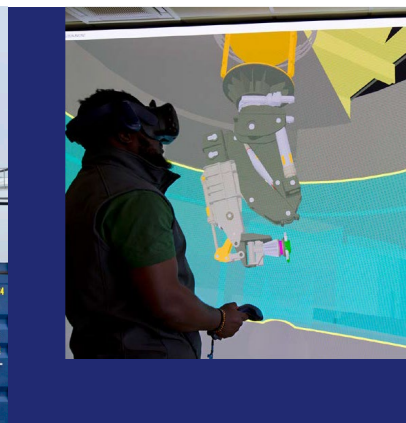


Cyclife by the *numbers*

➤ By applying a *unique waste-focused approach*, Cyclife helps nuclear operators reduce their costs and waste generation, optimize waste management programs, and promote metal recycling.



30 years
of experience
in the field

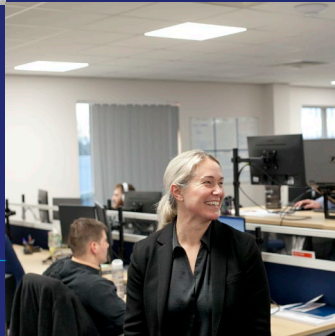


6 centres
of engineering
and expertise in
dismantling

145,000
tons of waste
treated in 30 years



1,200+
employees



5
mobile on-site
waste treatment
units

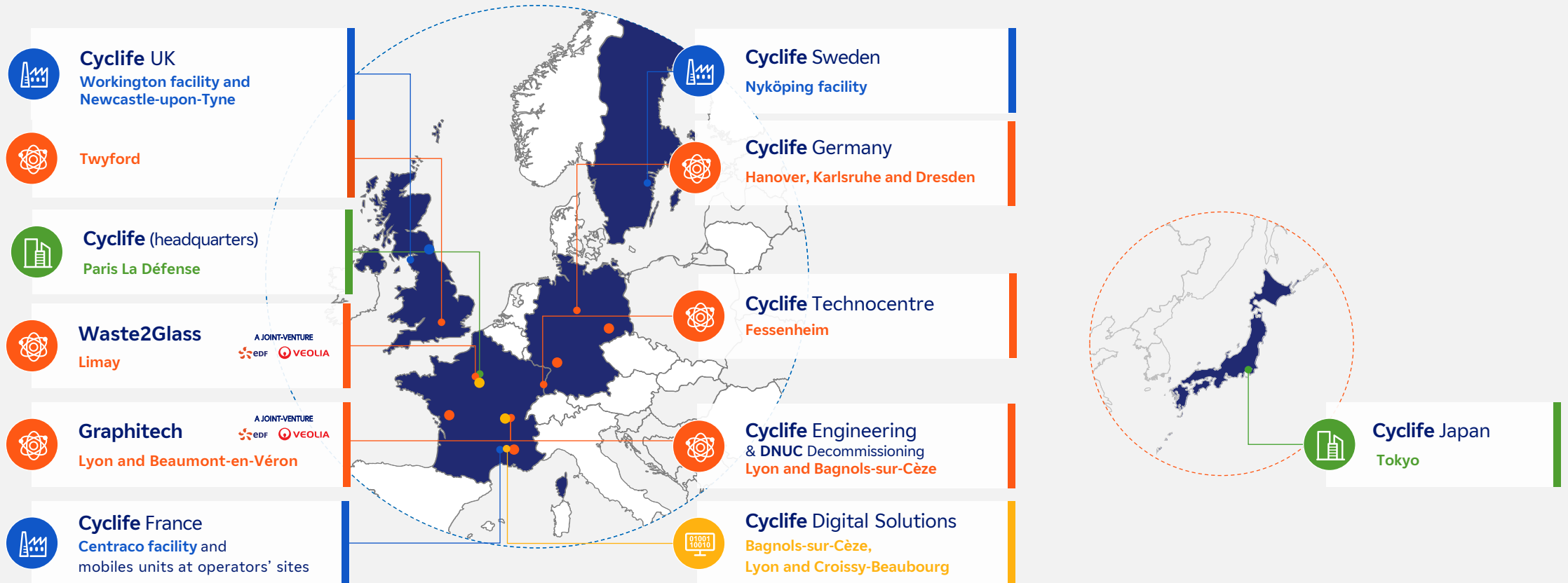
3 facilities
for waste
treatment



3
proprietary software

An *experienced multicultural* group

> Cyclife's highly qualified teams boast experience and specialisation in their respective domains. Strategically positioned in Europe and Asia, they serve the growing markets in these regions.



The activities and capabilities of Cyclife 

Cyclife is an expert in every aspect of *the nuclear cycle value chain*

> To meet current and future challenges, Cyclife is **committed to working with its customers**. The group mobilises **excellence, innovation and performance** to provide **tailor-made solutions** that support radioactive waste management and decommissioning throughout the entire nuclear lifecycle. With a presence in **Europe and Asia**, Cyclife is well-positioned to offer its services globally.



Circular economy



Radiation protection



Digital solutions



Metal melting



Training



Equipment manufacturing



Studies and design



Waste incineration



Strategy, planning and feasibility studies



Evaluation, assessment and analysis



Logistics studies



On-site services and works

CSR at the core of our business



Our CSR strategy is based on four pillars : The circular economy lies at the heart of our strategy, with social, societal and environmental aspects built around it.



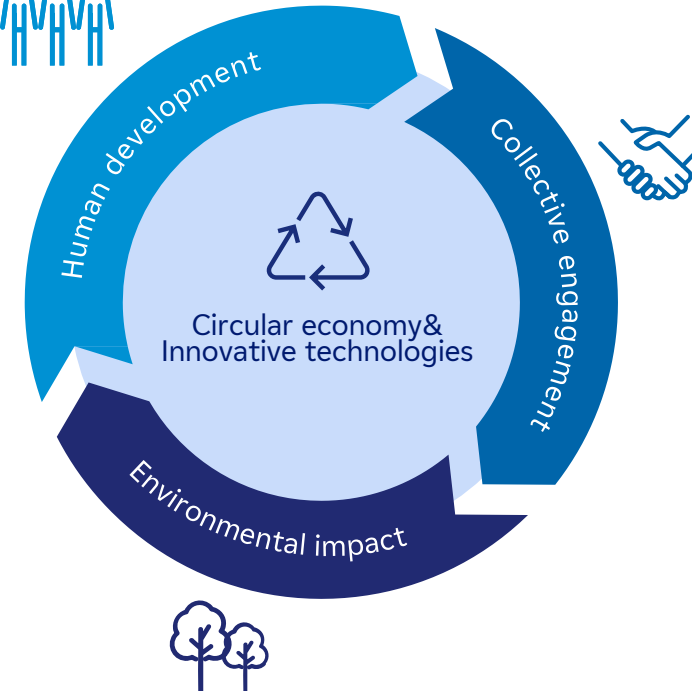
Human development

- Skills development
- Diversity
- Health/Safety
- Retaining staff through attractive working conditions



Circular economy and innovative technologies

- Waste reduction and recycling
- Practical projects to manage the entire lifecycle of nuclear facilities
- Nuclear facilities
- Digital innovations as drivers of optimisation

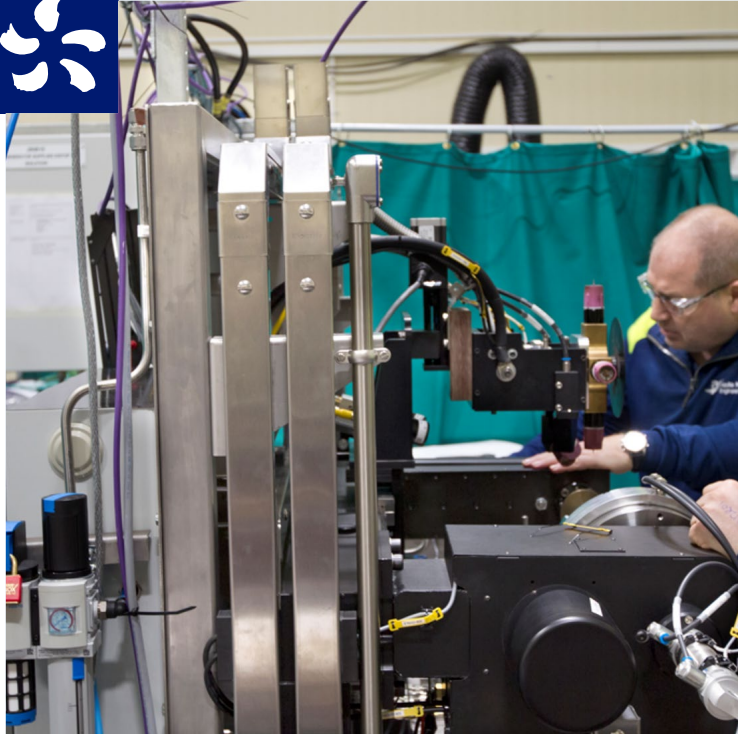


Environmental impact

- Controlling our CO2 emissions
- Controlling our energy consumption
- Limiting waste

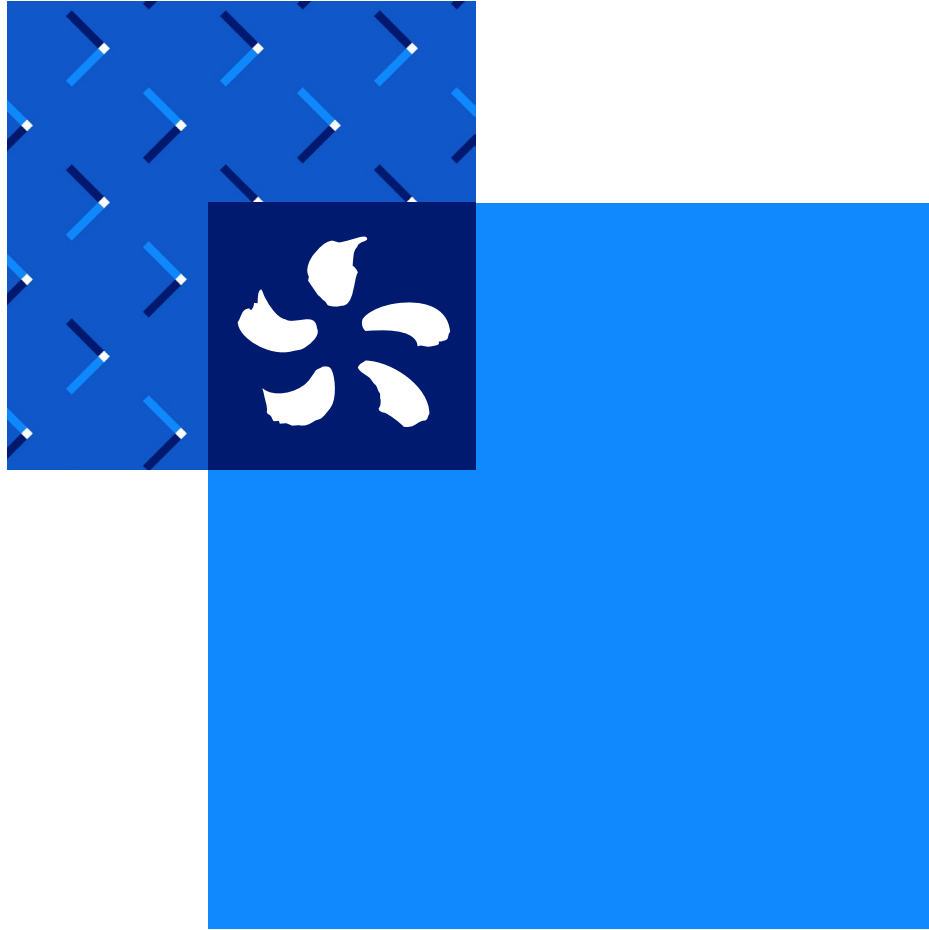
Collective engagement

- Account Manager
- Proactive communication
- Local roots



CSR initiatives across our four pillars

1. Circular Economy and Innovative Technologies	9
2. Human Development	12
3. Collective Commitment	15
4. Environmental Impact	18



1.

Circular economy and innovative technologies

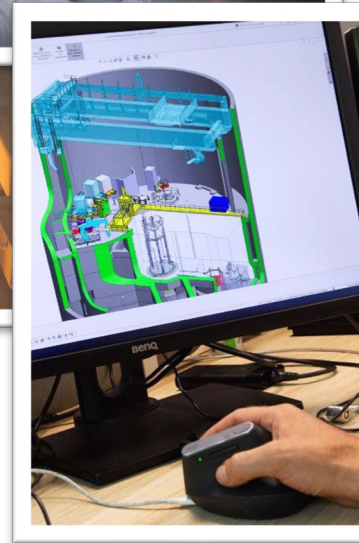
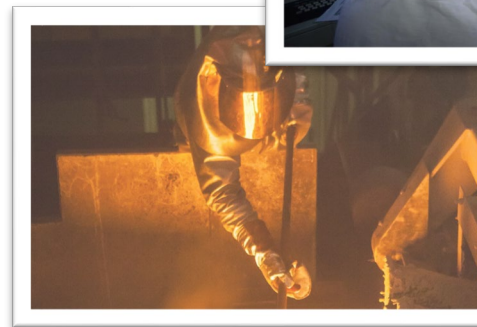
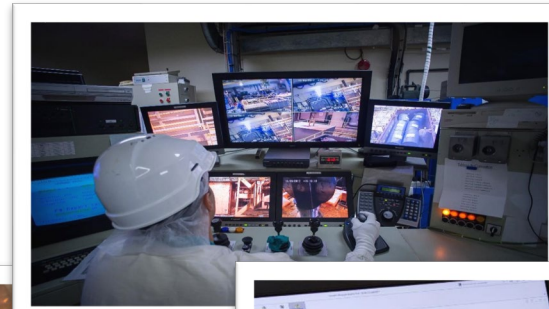
Practical solutions and tools

Circular economy and *innovative* technologies



To provide practical solutions for managing radioactive waste, with the primary objectives of reducing volumes and recycling materials.

Cyclife's core strength lies in its practical industrial solutions for managing waste generated by nuclear facilities, particularly metallic waste. Whether through operations at our plants or directly at the generating sites, or through the design of new facilities or processes, we are committed to reducing waste volumes or recycling them, thereby avoiding the consumption of raw materials



To demonstrate our ability to manage the end-of-life phase of nuclear facilities by offering proven and innovative solutions for these operations

Cyclife designs decommissioning scenarios, devises the technological solutions required to implement them, and carries out the work. The group's expertise enables us to offer comprehensive solutions, from the characterisation of facilities through to the removal of components, by adopting a systemic approach that incorporates waste management considerations.

To promote innovative technological solutions, particularly digital tools, to optimise our operations.

Our work involves carrying out operations in a complex environment. Cyclife develops innovative solutions, including the increased use of digital and robotic technologies to optimise working conditions and ensure effective management of schedules and operations.

Cyclife is committed to the *circular economy* by reducing waste volumes and pollution, recovering materials and refurbishing them for future use.



Eliminating waste and pollution



Circulate the materials

Regenerate nature

- Waste volumes are reduced by a factor of $\div 6$ (melting) and $\div 15$ (incineration), thereby reducing the need for storage space
- The risk of pollution is mitigated by converting heterogeneous radioactive waste into solid, stable and non-dispersible residues, ready for long-term storage in final repositories

- Decontaminated metals are recycled and reused in Sweden (up to 95%). In France, their reuse remains limited due to regulatory constraints
- The final residues are safely packaged for disposal, with certified containment and full traceability

- Decommissioning activities regenerate land by removing inherited infrastructure and restoring the soil's natural functions for future ecosystems
- Contaminated materials are removed and treated, enabling the sites to be safely reintegrated into local ecosystems

> COMMITMENTS

Providing practical solutions for radioactive waste management, including volume reduction and material recycling

To demonstrate our ability to manage the decommissioning of nuclear facilities by offering proven and innovative solutions

To promote innovative technological solutions, particularly digital tools, to optimise our operations

> PROJECTS

In 2024, **8,730 tonnes of waste were processed** at our various plants, which is 1,000 tonnes more than in 2023. In Sweden, **2,600 tonnes of ingots were sold and recycled, which is 900 tonnes more than in 2023.**

The project to build a new processing centre at the Fessenheim site is continuing. The aim is to process around 500,000 tonnes of steel, recycle over 80% of it and thereby avoid 300,000 tonnes of CO2 emissions.

2024 was also marked by progress on the **construction of the extension in Sweden**, which will double processing capacity.

Cyclife offers integrated services for the decommissioning and dismantling of EDF's nuclear facilities and those abroad. In 2024, **dismantling operations** began at EDF's Fessenheim site and at Creys-Malville for the reactor vessel. Detailed studies have been carried out on the St Laurent power station and on graphite reactors in the United Kingdom and Lithuania.

Our teams are also working on the design of waste treatment facilities (Technocentre project, Brennilis power station, Electrabel) as well as on the design of innovative robots for the decommissioning of graphite reactors.

Innovation is at the heart of our business and our teams. Following the development of its R&D roadmap in 2024, Cyclife is investing €6 million per year in R&D in 2025 and 2026. Some projects are funded by EDF, the ASN or grants. Cyclife invests across all its areas of activity, from waste management and decommissioning to digital technology and maintenance.

Cyclife is continuing its digital transformation and expanding its digital offering: BIM digital modelling; new services in 3D and 4D modelling; and the development of digital twin models for EDF and other clients.



Numerous achievements



Commissioning the Powerwall

Graphitech and Cyclife Digital Solutions have commissioned the digital wall using ViSu software on the industrial demonstrator: this will enable the verification and analysis of decommissioning scenarios and the operation of the remote-controlled immersive system.

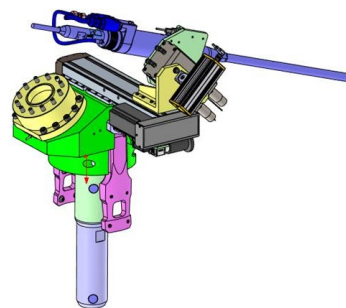


Operations at EDF sites

Work has begun on site at Fessenheim and Creys-Malville on the decommissioning of the reactor vessel.

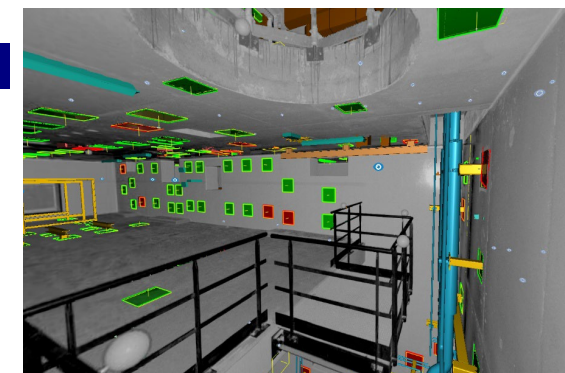
Robots for dismantling

A robot equipped with a laser head to dismantle the pressure tubes in the reactor at the Brennilis power station.



Digital technology supporting the new nuclear industry

Cyclife Digital Solutions has issued the first licences for its MySurvey software to EDF UK to ensure digital continuity for new nuclear projects.



Cyclife is investing in R&D

Innovation is at the heart of our business and our teams. Following the development of its R&D roadmap in 2024, Cyclife is investing €6 million per year in R&D in 2025 and 2026. Some projects are funded by EDF, the ASN or grants. Cyclife invests across all its areas of activity, from waste management and decommissioning to digital technology and maintenance.

Digital tools

Cyclife Digital Solutions is launching a tool called MySurvey to automatically detect discrepancies between design and implementation and is developing a customised dose rate engine with its DEMplus tool. CDS, Graphitech and EDF are developing virtual reality tools for design and engineering.

Waste and new roads

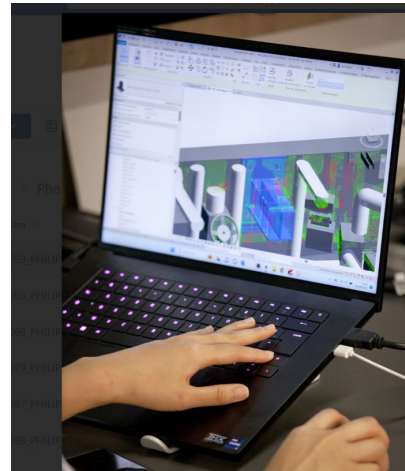
A partnership with the IRT Jules Verne to study the cleaning and release of concrete.

Automatic waste sorting

Cyclife Engineering is developing automated sorting systems for bulk waste, whilst Cyclife UK is investigating the sorting of waste from spent fuel assemblies at Oldbury based on their physical and radiological characteristics.

Maintenance and operations.

Cyclife France optimises maintenance shutdowns.



Laser cutting

Graphitech cuts thick or hard-to-reach metals remotely and develops high-precision cutting and handling tools.

Robotic

Graphitech is converting a remote-controlled demolition machine into an automated robot and is working on a system for the remote deployment of tools (modular mast, hydraulic arm)

Decontamination

Cyclife Sweden and the Technocentre teams are investigating the decontamination of Inconel tubes in steam generators (tube polling)





2.

Human Development

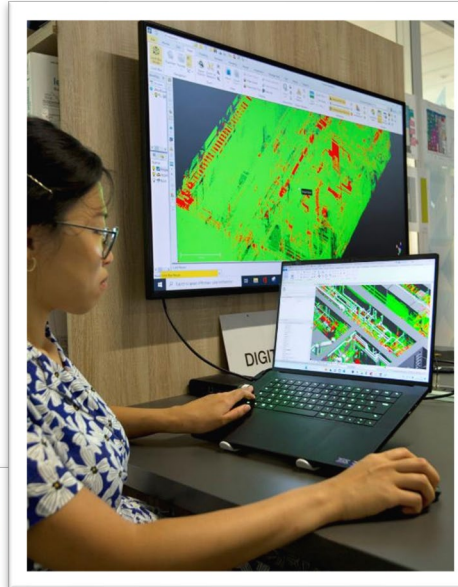
Committed employees with extensive expertise, united around Cyclife's four guiding principles to contribute to a responsible and sustainable nuclear industry

Developing our company's *human capital*



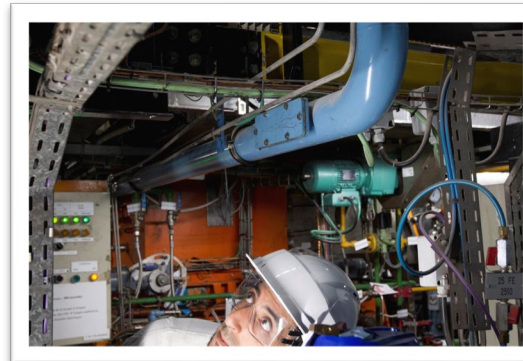
Developing our employees' skills

Fostering excellence through training and facilitating the transfer of knowledge. Because our employees, their skills and expertise are the Group's greatest asset, Cyclife has made the development of their skills and career paths a top priority



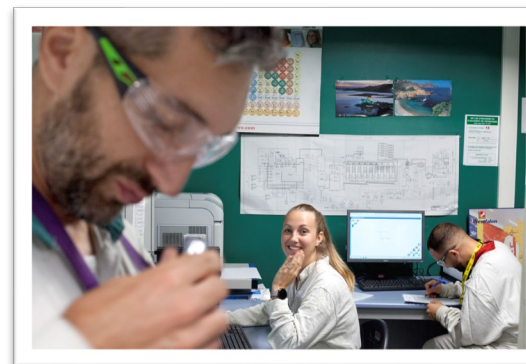
Retaining our staff by offering them working conditions that respect their work-life balance and foster long-term commitment

Balancing work and personal life: We recognise the importance of a healthy work-life balance.



Promoting diversity and inclusion within the company

The Cyclife Group is, by its very nature, a multicultural and diverse organisation, and is committed to promoting diversity and fostering inclusion as key assets for the Group's performance, appeal and creativity.



Safeguarding the health and safety of our employees and partners

Occupational risk prevention and health and safety at work are priorities for the Cyclife Group. Aware of its responsibility towards its employees and partners, the Group incorporates this commitment into everything it does.

> Commitments

Developing staff skills

Protecting the health and safety of our employees and partners

Promoting diversity and inclusion within the company

Retaining our staff, respecting their work-life balance and fostering long-term commitment

> Projects

Employees benefit from **role-specific and cross-functional training** throughout their careers (in 2024, 92% took part in a training programme). They also have the opportunity to develop and **share their skills and expertise through the Cyclife Group's and EDF Group's professional networks.**

Cyclife offers opportunities for career mobility and progression across its 10 main business areas and also provides pathways to the EDF Group

We encourage our employees to be innovative and to put forward fresh ideas through internal competitions or in collaboration with our partners.

Ensuring the health and safety of our employees, subcontractors and industrial partners is our top priority.

We are committed to this top priority of protecting health and safety, through our charter of 10 commitments signed by the directors of our entities, and the EDF Group's vital rules, which form the foundation for collectively protecting ourselves from risks.

A systematic analysis of incidents is carried out and shared with all departments. A number of initiatives have been launched to foster a stronger safety culture, notably through increased safety awareness, the identification of risky behaviour, a safer working environment and the commitment of everyone involved.

Cyclife aims to **provide an inclusive working environment** where everyone feels at home and valued. At Cyclife, we look first and foremost for skills, and for men and women who want to develop their careers within a company that places well-being and skills development at the heart of its commitments. A number of awareness-raising initiatives are carried out for employees and managers.

In 2024, Cyclife Aquila Nuclear, our UK subsidiary, became the first nuclear company in the world to receive ISO 30415 certification for diversity and inclusion, in recognition of its day-to-day work, which is guided by our guiding principles.

By the end of 2024, Cyclife had a workforce of 1,234. Compared with the end of 2023, this represents an increase of more than 300 new employees within the Group (including 200 new hires and the acquisition of a business in Germany).

Our corporate culture, centred on our purpose and guiding principles, is embedded throughout the Group and reflected in our HR processes. It forms the foundation of our identity by promoting a positive working environment and fostering collaboration between teams

> Results

	2024	2023
% of employees undergoing training	92%*	89%*
Accident rate resulting in time off work	2,1**	3
Employee satisfaction with safety	92%***	91%***
% of women in the Cyclife Group	22 %*	22 %
% of women on the executive committee	26 %*	28 %*
% of employees with disabilities	2 %*	2 %*
% Engagement rate (my EDF survey)	75%***	74%***
Index "great place to work"	76%***	75%***

* CDB not included

**CDB and GmbH not included

***CDB, GmbH, CGermany, CJapan not included

CSR is at the heart of our business and is based on a set of guiding principles



> The Cyclife Group’s culture, based on four key principles and its multicultural diversity, is embodied and shared by all employees.

Pillar : Human Development

Take care



81%
of employees are proud to work at Cyclife

To feel proud



92%
of employees say they work in good conditions

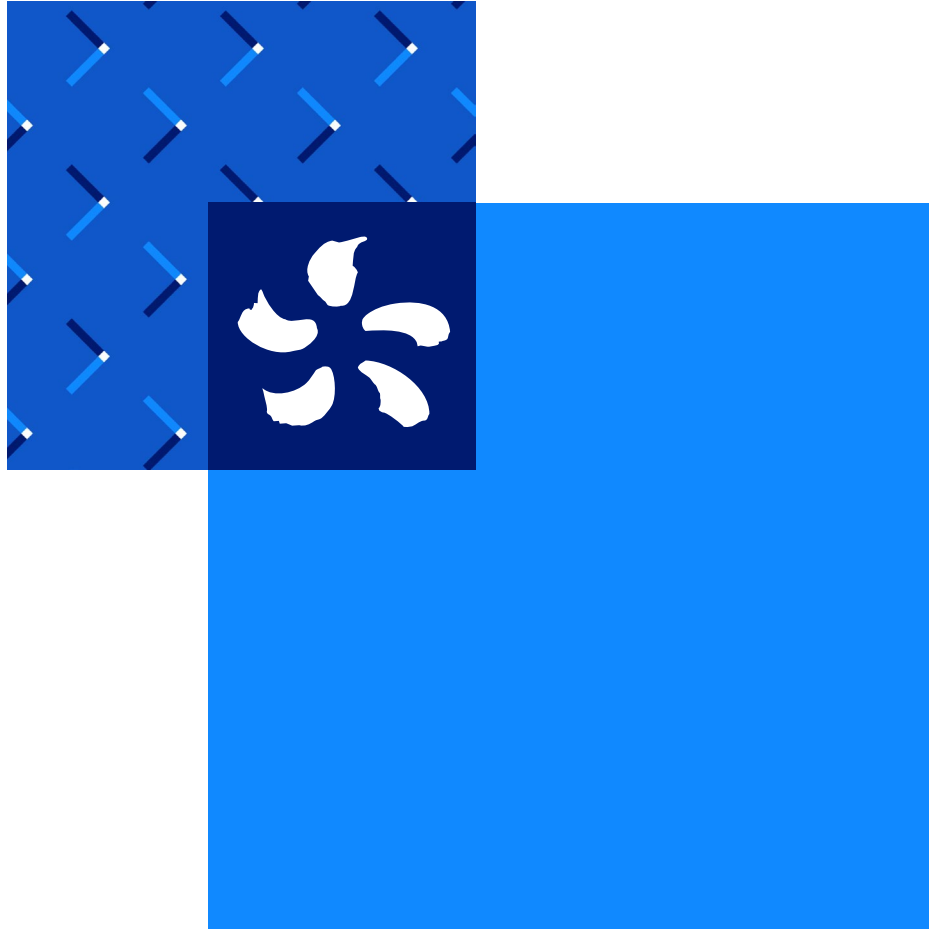
Acting collectively



84%
of employees feel they are given responsibility

Acting responsibly





3.

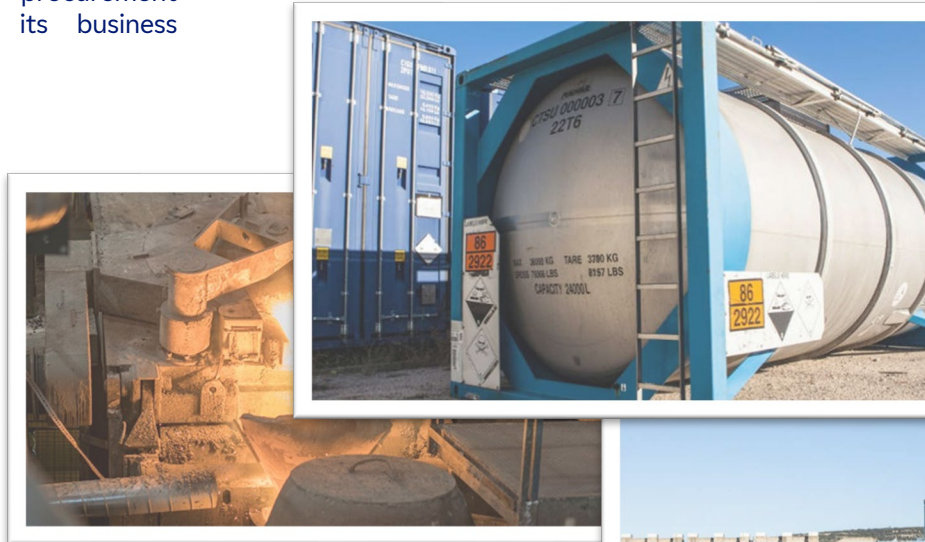
Collective commitment

Committing to our customers,
our partners and the public

Collective commitment

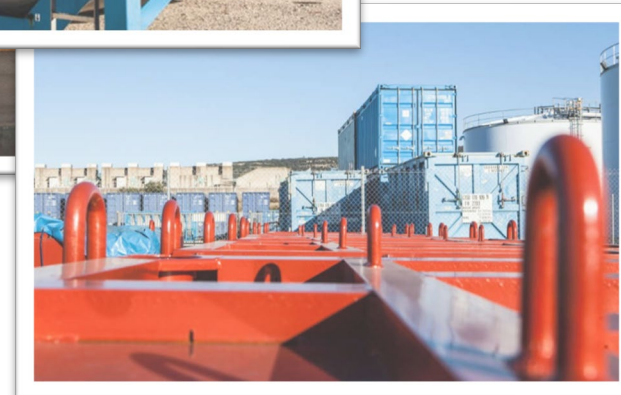
To maintain long-term, responsible relationships with our customers, partners and suppliers

High ethical standards, responsible procurement and transparency: Cyclife bases its business relationships on mutual trust.



To establish a long-term presence in the areas where we operate

Cyclife is an international group with numerous local offices. Engaging local stakeholders in our projects and their environmental, social and economic impacts is essential for building and implementing partnerships and finding suitable local solutions, particularly in a context of resource scarcity.



Communicating about our solutions, sharing our CSR commitments

Recognising the impact of its activities on public acceptance of the nuclear industry, Cyclife is committed to maintaining open and proactive communication with all its stakeholders. This transparency is reflected in the provision of regular and detailed information on its projects and progress in the field of waste management and decommissioning.

> Commitments

To maintain long-term, responsible relationships with our customers, partners and suppliers

Communicating about our solutions, sharing our CSR commitments

To establish a long-term presence in the areas where we operate

> Actions

Customer satisfaction is measured regularly across all business units. For example, Cyclife France achieved an 85% satisfaction rate in 2024.

Customers particularly highlight Cyclife's ability to propose improvement measures. They also praise the quality of the communication and documentation provided by Cyclife.

Teams are regularly informed about climate issues. More than 50 Climate Murals have been completed at Graphitech. Cyclife SAS and Cyclife Engineering include a CSR criterion in their annual profit-sharing agreement.

Employee ambassadors visit schools and universities to promote the company's employment opportunities and activities. Local events have been held at schools and universities in Gard, Lyon, Paris, the UK and Sweden.

Cyclife's CSR objectives are communicated through various channels (website, LinkedIn, etc.).

The Group's procurement policy is inclusive of CSR criteria, implemented consistently across all entities to promote solidarity and local purchasing.

In 2024, several solidarity initiatives were organised: including participation in Clean Day, the donation of tickets for the Olympic Games to local schools, and initiatives at the entity level...

The aspect of local roots is integrated into our policy and our industrial decisions in Sweden, the United Kingdom and France.

> Results



In 2024, 96% of customers recommended Cyclife France



More than 100 Cyclife employees have been trained on climate issues through the Climate Mural in 2024.



Cyclife is inviting the charity "Association de Parents et Amis de Personnes Handicapées Mentales" to the Paris 2024 Olympic Games

Awareness-raising campaigns and *solidarity initiatives* in every department



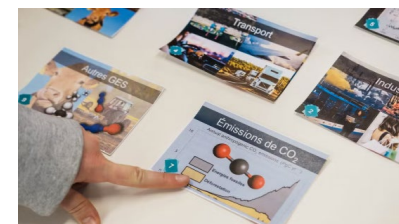
Pillar : Collective commitment

Cyclife invited members of the Adapei association to attend the canoe slalom events in Vaires-sur-Marne at the Paris 2024 Olympic Games

On 27 July, around thirty members of the Adapei 77 association visited the EDF pavilion in Paris and watched the canoe slalom events with colleagues from the group in Vaires-sur-Marne. It was a rainy but cheerful day that gave them the chance to discover this spectacular sport and cheer on Nicolas Gestin as he won the first round of events and, two days later, one of France's first gold medals! By opening the doors of the Games to members of Adapei 77 with intellectual disabilities, Cyclife reaffirms its commitment to caring for everyone, in a spirit of collective action, so that we can all share the same pride, whatever our individual circumstances.



More than 100 Climate Murals were carried out within the Cyclife Group, helping to raise awareness among staff of the challenges posed by climate change and the need to reduce CO2 emissions.



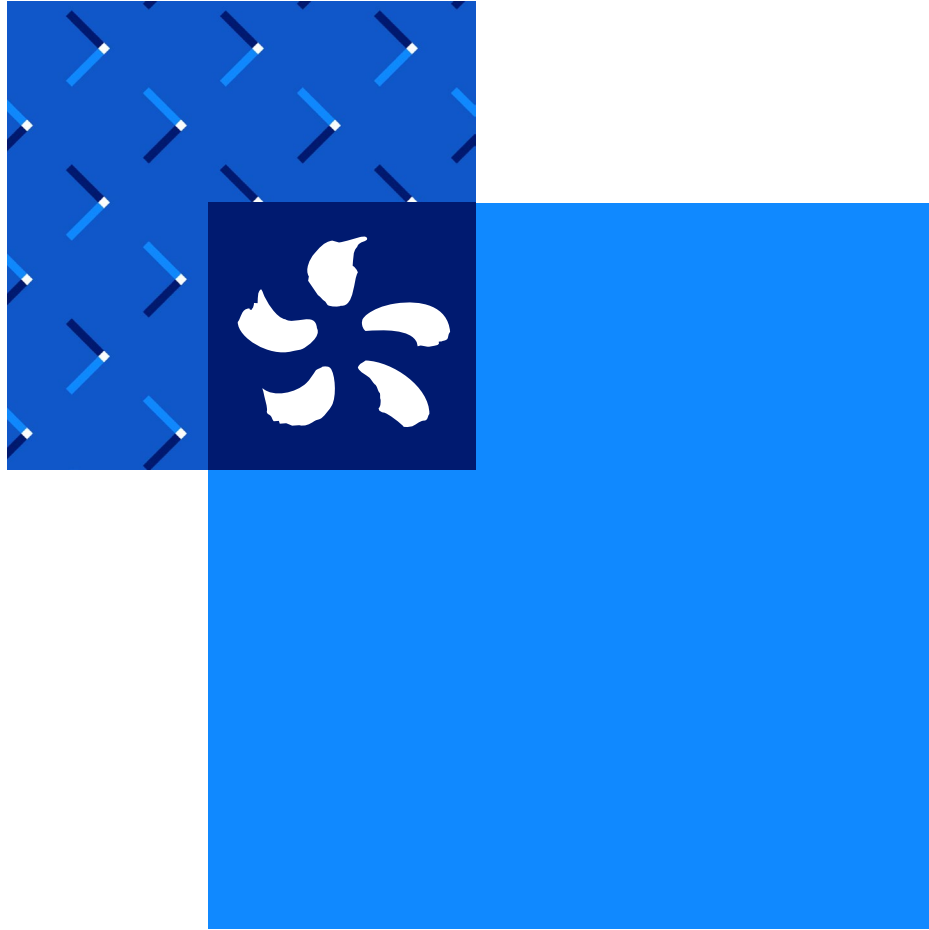
Cyclife promotes its business areas to schools.

In November 2024, Cyclife UK welcomed nearly 30 pupils aged between 8 and 10.

On the 5th November, #CyclifeUK hosted a school visit at our #Metal #Recycling Facility (#MRF) in West Cumbria. The theme of this visit was "#Safe and #Secure Management of #Waste"! ... plus

Afficher la traduction





4.

Environmental impact

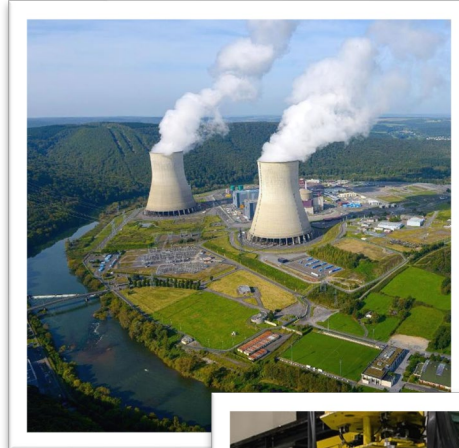
Energy management in a
changing landscape

Minimising the environmental impact of our activities



Reducing our carbon footprint

As a key player in the energy transition and the promotion of nuclear energy in response to the challenges of climate change, Cyclife aims to reduce CO2 emissions associated with its operations by targeting the stages of the industrial chain that contribute most to emissions (processing methods, transport, etc.) as well as our 'tertiary' activities. Seeking alternative solutions for the activities with the highest emissions and increasing the use of low-carbon energy sources.



Managing our energy consumption

Our environmental impact is closely linked to the energy consumption of our processes. Improving the performance of our industrial equipment and optimising the energy efficiency of our facilities across the Group's various business sectors are key components of our performance objectives.

Managing the waste generated by our activities

Cyclife's commitment to reducing waste volumes and promoting the circular economy must also extend to the waste the company generates, through a commitment to minimising waste production and recycling, particularly in the case of conventional and digital waste

> Commitments

Reducing carbon emissions

Managing energy consumption

Managing the waste generated by our activities

> Actions

Cyclife is working on **its carbon footprint** to identify the main activities responsible for emissions. Estimates have been made and measures are being taken to reduce the carbon footprint.

Cyclife France **analyses emissions from the incinerator** to minimise its carbon footprint.

The various entities within the Cyclife Group are currently engaged in **conducting their own carbon footprint assessments**, with the objective of producing a group-wide assessment..

The Technocentre project has conducted a **carbon assessment to evaluate the CO2 emissions avoided because of the project**. The emissions avoided amount to around 300,000 tonnes over the entire duration of the project.

Concerning "tertiary" activities (transport, digital data storage, etc.), measures to analyse and reduce the carbon footprint (sustainable transport, energy efficiency, etc.) have been implemented at each site.

The energy consumption of the three plants is measured annually (fuel oil, gas, electricity) to monitor usage, and maintenance work is scheduled with **energy consumption in mind**.

Systems for self-generation or heat recovery have been installed (e.g. solar panels at Cyclife France).

Our sites are certified (**ISO 14001 and ISO 50001** at Cyclife France).

Regarding (non-nuclear) waste, systems for sorting, collection and recycling are in place, including for electronic waste.

Results

Metal recycling

2024

2 700

Tonnes of ingots sold

5 600

Tonnes of avoided CO2



Sources:
Data ingots : CSW
Data energies : CFR, CSW and CUK for the EDF CSR reporting



Measures to reduce CO2 emissions

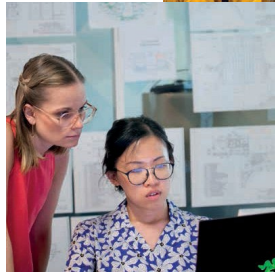


Cyclife France has installed 2,000 m² of shade structures fitted with 1,050 photovoltaic panels in its car park. Connected to the plant for self-consumption, this solar installation is expected to generate around 500 MWh per year. This is equivalent to the annual electricity consumption of the melting furnace, which is produced locally using renewable energy.

Technocentre The project underwent an assessment and optimisation process to ensure CSR objectives were considered, which led to the identification of several measures:

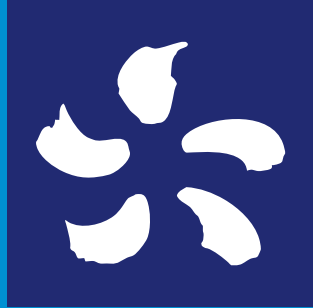
- Optimising land use to reduce land take
- Reuse of certain commercial buildings at the Fessenheim site (offices, staff canteen, canteen, car park, etc.)
- Minimising impacts on biodiversity and implementing compensation measures
- Conducting a greenhouse gas emissions assessment
- Reducing water consumption and emissions
- Multimodal transport...

Cyclife UK has explored the possibility of installing solar panels to supply the sorting centre with renewable energy. A framework agreement for electric cars has been put in place to encourage the reduction of carbon emissions during business travel and commutes. Cyclife has also obtained planning permission to install electric charging points at the sorting centre.



Cyclife SAS - Tour Europe
33 Place des Corolles
92400 Courbevoie
FRANCE





Cyclife SAS - Tour Europe
33 Place des Corolles
92400 Courbevoie
FRANCE



cyclife-edf.com