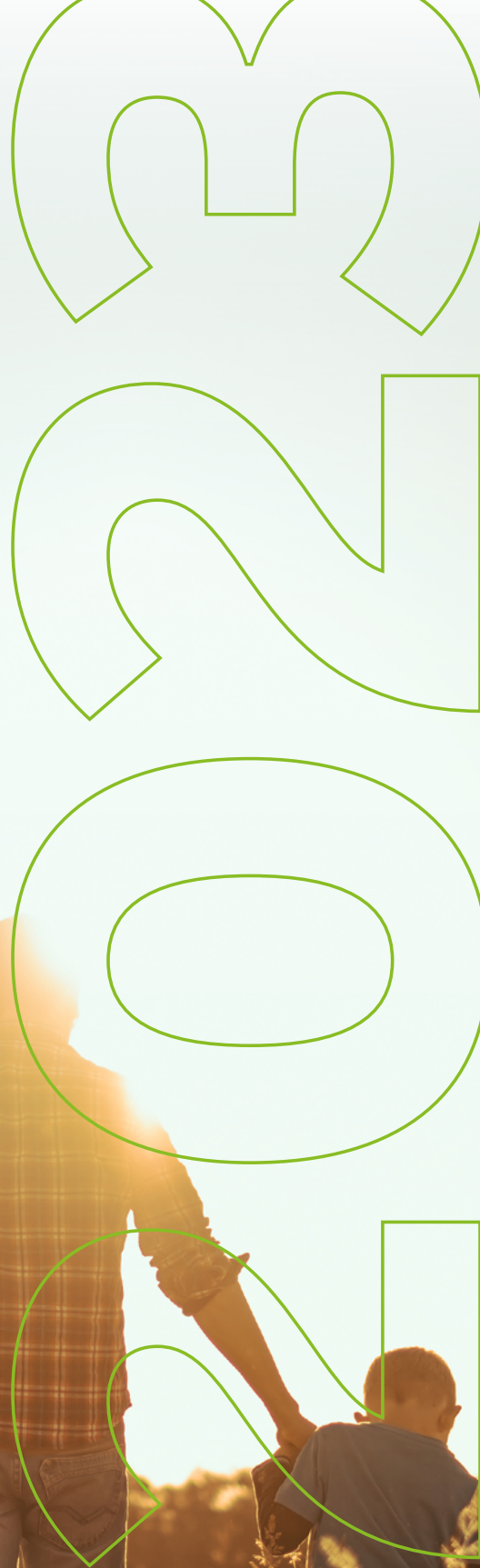




2023

Sustainable Business Update



Contents



We put
environmental
considerations at
the heart of our
business.

Welcome

At our core, Cyclife UK Ltd. (Cyclife) is a waste management and recycling business, and sustainability is embedded into our company philosophy. We work hard to protect the environment and deliver social and economic benefits to the communities in which we operate.

Cyclife enables sustainable decommissioning and waste disposal, by offering our clients waste-led decommissioning support and a range of treatment options for radioactive waste management.

Our UK waste treatment facility receives, treats and recycles radioactive metal waste to maximise the amount available for recycling and divert, as far as practicable, waste from the Low-Level Waste Repository (LLWR).

Where disposal at the repository is required, we minimise the mass and volume disposed.

As a responsible nuclear operator:

- Cyclife is certified to the international standards for Safety (ISO 45001), Quality (ISO 9001) and Environment (ISO 14001).
- Cyclife has achieved the UK Government backed Cyber Essentials Plus.
- Cyclife has been awarded the Silver certification with Investors in People.
- Cyclife was awarded the RoSPA Order of Distinction for the fourth consecutive year.



Message from our Managing Director



Cyclife is the decommissioning and waste management business of the EDF group. We work predominantly in the UK and provide waste management and decommissioning services to the Civil and Defence nuclear sectors.

The work that we do is essential in providing support to the long-term decommissioning programmes of organisations such as the Nuclear Decommissioning Authority.

Furthermore, we are supporting both EDF and the wider UK nuclear sector to meet their Net Zero ambitions.

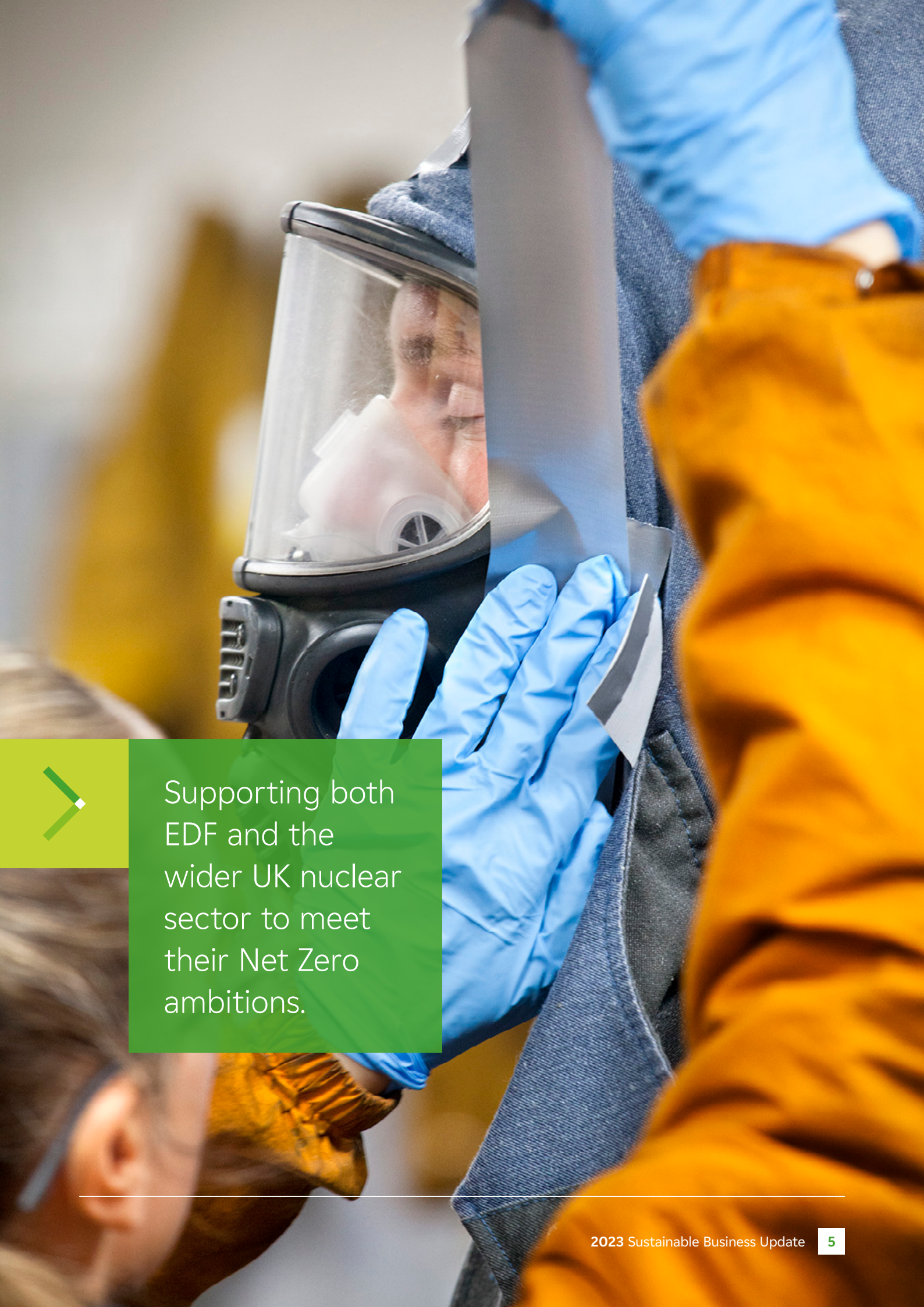
Nuclear energy is a key part of the transition from fossil fuels, however to build new power stations, it is important that the nuclear industry can demonstrate that legacy sites can be decommissioned in a safe and sustainable manner.

We aim to illustrate this through our ability to provide sustainable decommissioning and waste solutions for low level radioactive metallic waste.

This report details our work on developing a sustainable business; it reports on the progress we have made and is our demonstration that we are taking action to also reduce any impacts from our business.

Joe Robinson

Managing Director, Cyclife UK



Supporting both
EDF and the
wider UK nuclear
sector to meet
their Net Zero
ambitions.



Who we are and what we do

Cyclife is part of EDF's solution to sustainable decommissioning; we enable EDF to make progress on achieving their mission statement (EDF's raison d'être); Build a Net Zero energy future, with electricity and innovative solutions and services, to help save the planet and drive wellbeing and economic development.

Cyclife provides EDF with an integrated decommissioning and waste management platform to manage the metal and other wastes generated during the operation and decommissioning of the power stations, in a way which minimises the impact to the environment and follows the waste hierarchy.

Cyclife also offers these services to other nuclear operators, providing technical and operational support across the nuclear industry, allowing us to contribute to the overall clean-up mission for the UK's legacy nuclear sites.

Cyclife is proud to offer decommissioning, metal waste recycling and waste management services whilst being able to put environmental and sustainable considerations at the forefront of our services.



Waste Treatment Services

Cyclife operates a nuclear licensed site in Cumbria, the Metals Recycling Facility (MRF), where radioactive metallic waste is treated and decontaminated.

The MRF has been operating since 2009 and has processed waste from every major nuclear licensed site in the UK. The facility will sort wastes into type and waste route and determine an optimised process route to decontaminate and treat the metal; Best Available Technique¹ is applied at all times.

The facility has the capability to size reduce metallic waste before decontaminating the metal using mechanical decontamination techniques.

Once the metal has been treated, using state of art measurement techniques, the metal can be monitored to confirm that the metals are Out of Scope² and can enter conventional recycling streams.

The MRF continues to successfully treat low level waste metal which results in the majority of the metal meeting the characterisation and clearance requirements for metal recycling.

In 2023 the MRF improved the recycling rates through innovation and optimisation.

¹ Optimisation of waste management. 'Best available techniques' means the available techniques which are the best for preventing or minimising emissions and impacts on the environment.

² Out of Scope equates to 'not radioactive' and our out of scope wastes are not subject to regulatory control under Radioactive Substances legislation. The risk to the environment and human health is considered to be negligible.

Decommissioning Services

Cyclife's decommissioning team comprises business units and support functions that work together to deliver projects for clients:

- **Major Projects** – a team of specialists who help customers deplant, manage wastes on-site and prepare wastes for off-site transport. The team also plan and execute the safe transfer of larger waste items to the Cyclife treatment sites; by road and sea. In addition, this team will complete decommissioning and general site works at a customer's premises.
- **Integrated Waste Management** – a team of waste management and decommissioning specialists who supporting clients' strategy development and project planning and waste characterisation by providing services in a range of waste management areas.
- **Design and Implementation** – a team of engineers and project managers who specialise in design and implementation and construction of decommissioning solutions at customer sites.
- **Support Functions** – different teams that ensure that the core operations run efficiently.



Case study

Cold Cutting Facility

An Engineering and Operational Success.

The Cold Cutting Facility provides the capability to size-reduce large items of low level metallic waste³, during 2023 the facility was successfully commissioned.

We designed and engineered the facility to provide a decommissioning solution for large waste items that previously could not be sized reduced at the customer's site or within our facility.

The work was completed to a high standard by a team from Cyclife and our subcontractor partners.

³ Low Level Waste (LLW) contains relatively low levels of radioactivity, not exceeding 4 gigabecquerel (GBq) per tonne of alpha activity, or 12 GBq per tonne of beta/gamma activity.



Case study

On Site Drum Disposal

Low Level Waste Repository.

In 2022, the Major Projects team began emplacement of drums into the interspatial gaps within the LLWR Vault on behalf of NWS and their ultimate customer, NRS.

Cyclife was required to develop a method, design bespoke lifting and placement equipment and trial this at an inactive facility to demonstrate the concept and ensure that all safety and environmental criteria could be met.

The spaces then had to be prepared for the placement operations at the repository site. In 2023 the team made good progress at site and met the required milestones within the project. The expectation is that this project will finish in early 2024; realising significant environmental and financial benefits.

This work will save NRS future ILW disposal costs whilst at the same time optimising the available disposal space at the LLWR. By using this space, the carbon burden associated with the requirements for additional vault space has been reduced.

Our Approach

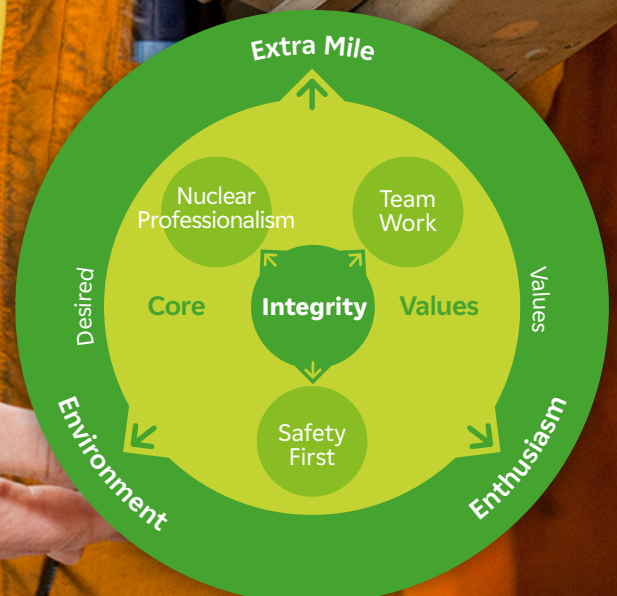
The strategic aim of Cyclife is to be the UK's leading waste-led nuclear decommissioning business and demonstrate that nuclear waste can be managed sustainably.

Our strategy is underpinned by our values, ambition and commitments. Our core values encourage working as a team, integrity and professionalism whilst always prioritising safety. We encourage our employees to go the extra mile for customers, are enthusiastic and demonstrate a commitment to the environment.

Cyclife are on a journey to becoming a more sustainable business. As part of this we are committed to driving progress in-line with the UN's Sustainable Development Goals, the ambitions set at COP26; initiatives such as Race to Zero, and the UK Government's Net Zero and Energy Security Strategies. We want to be part of the solution and have assessed our sustainability impact using the Global Reporting Index to identify how we support the sustainable development goals and improve our impact to local communities, the environment and climate change.

Through assessing our impact, we have identified the following areas of focus;

- Supporting British Nuclear
- Climate Change: Net Zero
- Respect for the Environment
- Wellbeing and Cohesion
- A Great Place to Work
- Positive Social Contribution



Our goals



Supporting British Nuclear

We know that the UK must safely and sustainably decommission its nuclear sites; this includes appropriate treatment of the wastes that arise from these activities.

We are at the forefront of the decommissioning and waste industry, providing an integrated approach to decommissioning and waste management.

We recognise that to do this we need to invest in the training and development of the next generation of nuclear specialists and our current workforce.



Climate Change: Net Zero

We believe in a Net Zero future and are supporting The Climate Change Act, the UK's and EDF's commitment to reduce carbon emissions by 2050.

The treatment of metal allows for metal that would otherwise become waste to re-enter the supply chain, this helps to reduce the carbon burden associated with the mining and processing of metal ores; contributing to lower carbon life cycles of the decommissioning of nuclear licence sites.

We are also demonstrating that the nuclear power stations can be decommissioned sustainably and thus support the construction of new power stations. These are important if the UK's ambitions to be energy independent and Net Zero.



Respect for the environment

As a responsible business we aim to limit the impact that we have on the environment. We ensure that all of our service offerings consider the environmental impact and seek, at all times, to reduce this.

To provide confidence that we are managing our environmental aspects Cyclife are accredited to ISO 14001.



Wellbeing and cohesion

The safety and wellbeing of our employees is one of our top priorities. We want to make sure that the physical and mental wellbeing of our employees is supported; we have implemented a range of health and wellbeing initiatives and schemes for our employees.

We will monitor and report our safety performance to ensure transparency with our stakeholders.



A great place to work

Our vision is that we have a supportive work culture that encourages productivity and innovation. We are investing in training, skills and education programmes for our employees to support their career development.

We also want to close the equality gaps that we see in the nuclear sector and have the best and balanced work force to deliver high quality work for years to come.



Positive social contribution

We believe that the work that we are doing should and does benefit the local communities in which we operate.

We recognise that we have an opportunity to support communities within West Cumbria and across the UK through the range of projects we support and sites that we attend.

Measurement and progress – 2023

4%

Conventional hazardous wastes generated at MRF



2023

96%

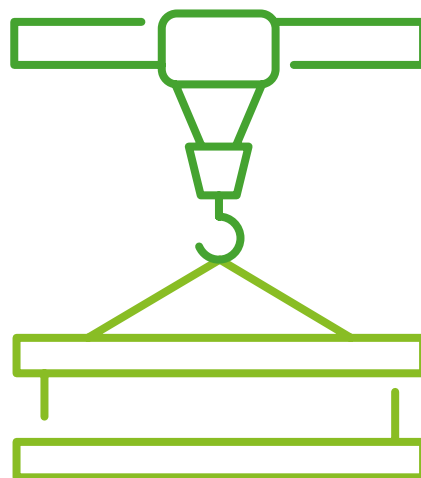
Conventional non-hazardous waste generated at MRF

 **17**
Apprentices
in training



Dose at the fence line

Highest to a member of the public.



99%

Diverted from LLWR

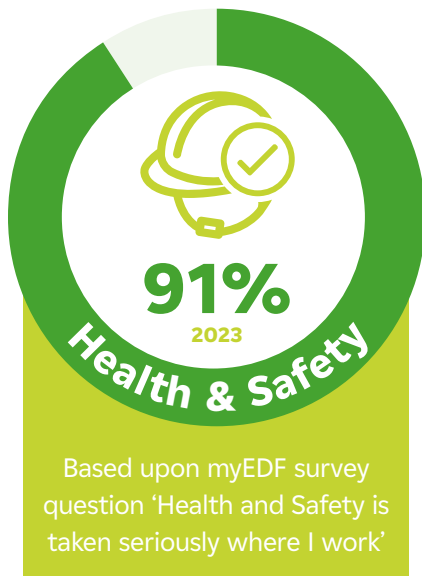
69%

Diverted from landfill



Recycled metal





£5,127,000

Spend in supply chain in SME



86%

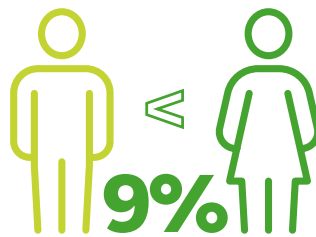
of employees are proud to tell people they work at Cyclife

SCOPE

2^{GHG}

Indirect Emissions

129
teCO2e



9%
The mean gender average pay gap



32
Training hours per employee



We contributed
£8900

to local charities across the Cyclife business

2023

SCOPE

1^{GHG}

Direct Emissions

48
teCO2e



30% of Cyclife employees are female



32%

of female employees are in senior leadership roles



Employee Turnover

20

Climate Change: Net Zero

Cyclife recognises that we have a part to play in limiting the rise in global temperatures to below 2 °C and meeting the commitments within the Climate Change Act.

We have a commitment to achieving Net Zero by 2050 and a significant reduction by 2030. Cyclife has defined significant as at least a 50% reduction. We have developed our organisational carbon footprint using the methodology within the Greenhouse Gas Protocol. Our baseline was calculated in 2022 and the subsequent years will be calculated and reported annually to record our progress against our Net Zero commitment.

Our scope 1 emissions arise from the emissions that Cyclife makes directly. These are the emissions from the vehicles and machinery that require diesel/oil.

Our scope 2 emissions arise from our indirect emissions. Our scope 2 emissions arise primarily from the use of electricity at our Metals Recycling Facility. Cyclife uses EDF as a NetZero energy supplier for our electricity to reduce our scope 2 emissions.

Cyclife have started to calculate our scope 3 emissions. Further baselining and refinement of data is required, although this does not preclude action being taken to reduce emissions.

The following carbon reduction actions have been completed or started in 2023 and are part of our carbon reduction plan:

- Raising awareness of employee's carbon footprint through regular communications such as toolbox talks. We are encouraging our employees to learn more about reducing their environmental impact. We will continue to issue internal communications and offering training to employees to allow for behavioural changes to be implemented that will reduce our carbon emissions.
- Development of a business case to understand if installing Solar Pannels would allow for renewable energy to supply the MRF. The business case was approved at the end of the year, and we are now proceeding with the next stages.
- Introduced an electric car scheme as part of our employee benefits to encourage lower carbon emissions during business travel and employee's commuting. Cyclife also have planning permission granted for the installation of electric charging spaces at the MRF and will continue to work towards installing the charging spaces for our employees.

Our work with customers to recycle metal provides carbon benefits. We treat and recycle primarily metallic waste from civil and defence nuclear sites, prolonging the use of the metals and contributing to a more sustainable supply chain and supporting a circular economy. In addition, the process of converting ores into useable metal is carbon intensive; using recycled metal therefore reduces the carbon footprint associated with the onward products.

Supporting British Nuclear

Cyclife works with our customers to provide waste led decommissioning solutions to the UK nuclear industry.

Seeking to maximise metal recycling and the application of the waste hierarchy and consequently support British Nuclear companies. We will continue to support the British nuclear sites in responsibly managing their waste.

Cyclife seeks to address the increasing skills gap in UK nuclear industry and invest in the training of apprentices and supporting young professionals in their career development. In 2023 we hired degree apprentices within the Project Management Office, Waste Treatment and Decommissioning Department.



Harvey Laker
Project
Management
Degree Apprentice

Hi, my name is Harvey. I started my Project Management Degree Apprenticeship back in September 2023. I am enjoying my apprenticeship as I can apply the content that I am learning from my studies into my daily work.

During my apprenticeship I have been given the opportunity to support various project management activities for Cyclife, which have been really interesting.

I love working for Cyclife as I have had a huge amount of support from my line manager and colleagues. The supportive environment has made me feel welcome and taught me a lot about the nuclear industry.

Respect for our environment

Cyclife recognises the Duty of Care that we have to protect the environment and prevent the unnecessary generation of waste and radioactive discharges.

The environmental risk of all our activities are assessed, and appropriate control measures are implemented to eliminate, mitigate and control the identified risks.

Cyclife is certified to the international standard for environmental management; ISO 14001.

Waste

The MRF applies Best Available Technique to minimise the secondary waste generated, and will apply the waste hierarchy to identify an optimised waste route.

Radioactive Discharges

Cyclife has engineering controls in place to ensure that we are not releasing harmful levels of radioactive discharges into the atmosphere. We continuously monitor or gaseous discharges and take regulatory samples monthly to report to the Environment Agency. Our annual discharges were significantly within our permitted levels:

- 0.7% of our permitted limit for alpha radionuclides
- 2.9% of our permitted limit for other radionuclides

Regular, routine surveys are completed across our site, and in 2023 no radioactivity was detected outside the processing building or at or beyond our site boundary.

Wellbeing and cohesion

| Health and Safety.

Safety is the top priority for Cyclife; we believe all harm is preventable and are therefore committed to Zero Harm. Our value Safety First establishes our expectation of our all our employees. Our aspiration 'Home Safe' summarises our ambition.

Cyclife is certified to the international standard for Safety; ISO 45001. In addition, the MRF is subject to routine inspection by both the Office for Nuclear Regulation (ONR) and Environment Agency (EA) to provide assurances to the general public that Cyclife MRF operations continue to be safe. All our inspections in 2023 were deemed compliant by our independent Regulators.

Cyclife have a dedicated Compliance Team that supports the delivery of suitable safety outcomes, in conventional health and safety, nuclear safety, security and radiation protection.

At our treatment facility we handle hundreds of tonnes of metal and at our customer sites we complete construction, deconstruction and waste handling operations. Much of this work is manual in nature and we have safety controls in place to protect our employees. We take safety seriously, but did experience a lost time accident in 2023, to one of our subcontractors.

Whilst, this was not directly related to our waste treatment operations, we consider the safety of our subcontractors just as important to those of our employees and responded accordingly to ensure that future safety incidents of a similar nature do not occur. The Cyclife Lost Time Incident Rate (LTIR) at the end of 2023 was 3.4 (vs 4.4 in 2022) and we are continuing to work hard to prevent harm and improve our overall performance.



Cyclife were awarded the RoSPA Order of Distinction for the fourth consecutive year.

| Mental Health Awareness.

Cyclife have recognised the importance of talking about different mental health concerns in the work place. We have a team of Mental Health first aiders who run campaigns throughout the year to; support employees, raise awareness of mental health and reduce the stigma around talking about mental health.



| Radiation Protection

Cyclife operate a comprehensive radiation protection programme, overseen by our Radiation Protection Advisers. Our teams work diligently to ensure both employee and public safety. We complete an extensive annual survey programme to ensure the cleanliness of our work environment and external areas. Cyclife has industry leading inventory management systems to track radionuclides through the process to ensure that they are responsibly managed.

Before Cyclife accepts waste for treatment, the radiological properties are subject to review to understand if safe treatment is possible; waste will not be accepted unless the measures in place will be sufficient.

Comprehensive radiation risk assessments are completed when additional conformation is required to ensure that our workers and the public will be protected.

Our annual employee dose figures were within expectation and the dose (as reported to ONR) at the MRF fence line, to a representative member of the public, remains less than 0.002 millisieverts⁴. In 2023 the maximum theoretical public dose from our operations was calculated to be 0.00084 millisieverts, the equivalent of eating two Brazil nuts (8.4g)⁵.



Great place to work

Diversity and Inclusion.

Cyclife respects our diverse workforce and promotes inclusion across all our activities. Cyclife recognises the importance of enabling people from all backgrounds to feel safe and welcome to be their true selves at work. We endorse employee led working groups; Culture Club and Women's Network. Both groups are sponsored by a senior leader and meet regularly to encourage understanding and drive action within the organisation.

Cyclife monitors the percentage of women who are in senior leadership roles, including the board, senior management team and the business unit management teams. Cyclife's senior leadership team comprises 30% women, including the chair. It is recognised that there remains improvement to be made to ensure that we address the imbalance.

Cyclife seeks to pay every employee fairly and have equal pay between each job specification. As reflected within the wider industry, there is a disparity in the number of women within operational roles which unfortunately impacts the pay gap.

The mean gender average pay gap was 7% in 2023. Cyclife has no role-for-role pay gaps and all staff are paid equally. The gender pay gap arises from the distribution of male and female staff across different teams in the business. We are working to improve gender balance in all teams and this will help to close the gender pay gap over time.

⁴ For ionising radiation (X-rays, gamma-rays, electrons, neutrons etc.) the quantity of absorbed energy is called a "dose" and is measured in sieverts (Sv). A sievert is a very large and extremely unusual dose so more often we talk about thousandths of a sievert - a millisievert.

⁵ UK Health Security Agency, Radiation Protection Services, Ionising Radiation and you, <https://www.ukhsa-protectionservices.org.uk/radiationandyou/>

National Inclusion Week

During National Inclusion Week a Makaton session was held to raise the importance of clear communication and ensuring that everyone is included when hosting meetings, workshops and other in team events.



The attendees were taught some common signs and how to sign some of the common acronyms within the nuclear industry using the alphabet as well as being informed around the importance of inclusion in communication style.

Employee Support

Cyclife is committed to attracting, developing, and retaining talent.

Cyclife invest in the development of our employees. Cyclife encourages and supports training that is aimed at improving the skills of the employees to allow for the personal development of our people as well as enabling the company to increase the quality of the services offered.

Mentoring

We view mentorships as a great way for both Mentors and Mentees to develop skills and positively impact personal development.

Therefore, we believe that it is an important tool for supporting employers, especially those who have barriers in their careers. Our staff have the opportunity to participate in the UK-France Women in Nuclear: Mentoring Programme.

The programme connects early to mid-career women in the British and French nuclear sectors and pairs them with a senior mentor.

It is an excellent opportunity to support women in the nuclear sector who are interested in expanding their international network and learnings from some of the most senior men and women in the British and French nuclear industries.

In 2023, five of our staff took part in the scheme and gained valuable experience and skills. We will encourage more of our staff to volunteer to take part in the 2024 cohort of the membership.

Chartership

Cyclife supports our employees in obtaining chartership and fellowship at different professional memberships.

Cyclife have memberships in the following organisations; Chartered Institute of Waste Management, Project Management, Chemist, Physicist, Scientist.



In 2023 Dr. Steve Black was awarded the status of fellow at Chartered Institute of Waste Management. Steve has become one of the very few CIWM fellows within the nuclear decommissioning sector.

He has been recognised for his exceptional achievements, professionalism, and leadership within the nuclear sector. Steve is now mentoring other Cyclife staff towards chartership to further enhance our professional skills.

Positive social contribution

Cyclife aims to provide a positive social contribution to the local area in which the MRF is located and the local areas to our projects and home working staff.

Cyclife are proud to support our local community within Cumbria, through providing employment opportunities, supporting the local supply chain, offering apprenticeships and volunteering time and donations to local and national charities.

Cyclife operate a Point of Work Risk Assessment system called STAR+. To encourage our staff to use the risk assessment and have discussions about safety we donate £1 to our employee nominated charities for every STAR+ form that is completed. This allowed for an additional £1118 to be donated to our employee selected charities in 2023.

Cyclife seeks to support SME's and especially those based in Cumbria to support local businesses. Across the UK, 31.2% of our revenue was spent with SME's, this is through the procurement of; transportation, technical specialists, maintenance, engineering.

Supporting STEM

Our staff have been supporting STEM activities and in 2023 Cyclife created the STEM ambassador network.

This network was designed to provide support to our staff that are currently delivering STEM activities and provide support for those who would like to start volunteering and guidance on how to become a STEM ambassador.

Local charities

Throughout 2023 the Cyclife UK office hosted fundraising events to support various charities.

Inviting guest speakers in to discuss relevant topics and raise awareness. Throughout December our offices at Lillyhall Cumbria supported their communities through donating to local charities; Operations Christmas Child Shoe Box appeal, North Lakes Food Bank, Kenzies K9 Search, Rescue Christmas Boxes and Cash for Kids.

Sustainable Business Datasheet

Metric	Units	2020	2021	2022	2023
Climate Change - Net Zero by 2050					
Scope 1 GHG	teCO2e			48	48
Scope 2 GHG	teCO2e			113	129
Supporting British Nuclear					
Recycled metal - diverted from landfill	%	79	69	70	69
Recycled metal - diverted from LLWR	%	98	99	99	99
Appentices in training	#	4	9	16	17
Respecting our Environment					
Alpha gaseous discharge from MRF stack - total activity	kBq	4.23	4.02	4.03	4.03
Alpha gaseous discharge from MRF stack - percent of limit	%	0.85	0.80	0.81	2.81
Beta gaseous discharge from MRF stack - total activity	kBq	16.41	19.61	16.02	16.02
Beta gaseous discharge from MRF stack - percent of limit	%	3	4	3	3
Total Conventional Waste (MRF)	kg	6210	9560	3600	3600
Percentage of total conventional hazardous wastes generated at MRF	%	4	0	4	4
Percentage of total conventional non-hazardous waste generated at MRF	%	96	100	96	96
Working with People - Wellbeing and Cohesion					
Safety					
Lost Time Accidents	#	0	0	2	1
Number of Lost Time Accidents (>1 day)	#	0	0	1	1
LTIR per 1 million hours - all Cyclife	#	0	0	4	3
TRIR per 1 million hours - all Cyclife	#	73	64	56	22
EDF Defined High Potential Events	#	1	0	3	2

Metric	Units	2020	2021	2022	2023
Health and Safety is taken seriously by Cyclife - based upon myEDF survey question 'Health and Safety is taken seriously where I work'	%	98	93	92	91
Radiation Protection					
Dose at the fence line - highest to a member of the public	microSv	0.37	0.62	0.62	0.84
The dose to a classified worker per kg of waste treated at the Cyclife MRF	microSv/kg	no data	3.12E-04	4.56E-04	7.36E-04
Building a Better Business - A great place to Work					
Diversity and Inclusion					
The percentage of women in senior leadership roles - including board, Cyclife Management Team and Business Unit Management Teams	%	20	25	40	32
Female employees working for Cyclife	%	25	28	29	30
The mean gender average pay gap	%	10	9	7	9
Employee Support					
The training hours per employee	hr/ employee	31	34	37	20
Employee contentment					
Employee Turnover	%	2	6	11	20
Employee Pride - based on myEDF Survey question 'I am proud to tell people I work for Cyclife'	%	95	90	86	86
Postive Social Contribution					
Contribution to charity across Cyclife business units to local charities	£	2947	3482	3125	8900
Spend in supply chain with SME	£	3820K	4402K	4788k	5127k

Glossary

BAT	Best Available Technique	Optimisation of waste management. 'Best available techniques' means the available techniques which are the best for preventing or minimising emissions and impacts on the environment.
Bq	Becquerel	
CCF	Cold Cutting Facility	
EA	Environment Agency	
ED&I	Equality, Diversity and Inclusion	
EPR	Environmental Permitting Regulations	
GHG	Green House Gas	
GRI	Global Reporting Index	
HEPA	High Efficiency Particulate Air [filter]	This type of air filter can theoretically remove at least 99.97% of any airborne particles with a size of 0.3 microns (µm).
kBq	KiloBecquerel	
ILW	Intermediate Level Waste	Exceeds the upper boundaries for Low Level Waste but does not generate a significant amount of heat.
ISO	International Standard Organisation	
LA-LLW	Low Active Low-Level Waste	Those wastes with a total radioactivity of less than 200Bq/g (Becquerels per gram) arising from within the nuclear industry.
LLW	Low Level Waste	Low Level Waste (LLW) contains relatively low levels of radioactivity, not exceeding 4 gigabecquerel (GBq) per tonne of alpha activity, or 12 GBq per tonne of beta/gamma activity.
LLWR	Low Level Waste Repository	
LTIR	Lost Time Incident Rate	The number of lost time injuries occurring in a workplace per 1 million hours worked
MRF	Metals Recycling Facility	
NRS	Nuclear Restoration Services	
NWS	Nuclear Waste Services	
	Net Zero	A target of completely negating the amount of greenhouse gases produced by human activity
ONR	Office for Nuclear Regulation	Radioactive waste may be classed as 'out of scope' of the regulations if the risk to the environment and human health is considered to be negligible.
OoS	Out of Scope	Out of Scope equates to 'not radioactive' and are out of scope are not subject to regulatory requirement under the Radioactive Substances Legislation. The risk to the environment and human health is considered to be negligible.
RAD	Radiation	
RIDDOR	Reporting Injuries Diseases and Dangerous Occurrences	

ROSPA	Royal Society for the Prevention of Accidents	
SDG	Sustainable Development Goal	
SHEQ+S	Safety, Health, Environment, Quality and Security	
SME	Small and Medium Sized Enterprises	
STAR	Stop, Think, Act, Review.	
STEM	Science, Technology, Engineering Maths	
Sv	Sievert	a unit of radiation exposure dose that a person receives and is used with regard to what is exposed to radiation, i.e., the human body.
tCO2e	Tonnes CO2 equivalent	
WAC	Waste Acceptance Criteria	
WAR	Waste Acceptance Review	
UK	United Kingdom	
UN	United Nations	





If you have any feedback
on this report, please reach
out to the Cyclife team:

01900 64903

sales@cyclife-edf.co.uk

Scan or press
the QR Code to
find out more.